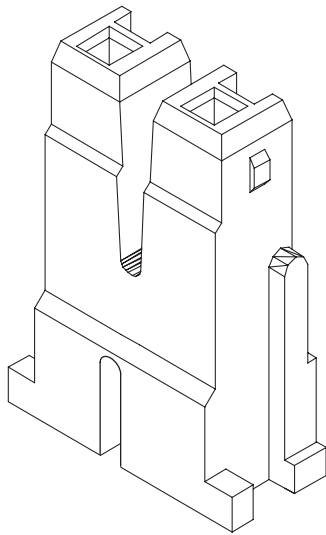


# 3.50mm (0.138") PITCH CONNECTOR

Wire-to-Board  
Housing

35001HS Series

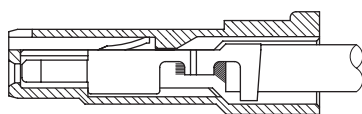
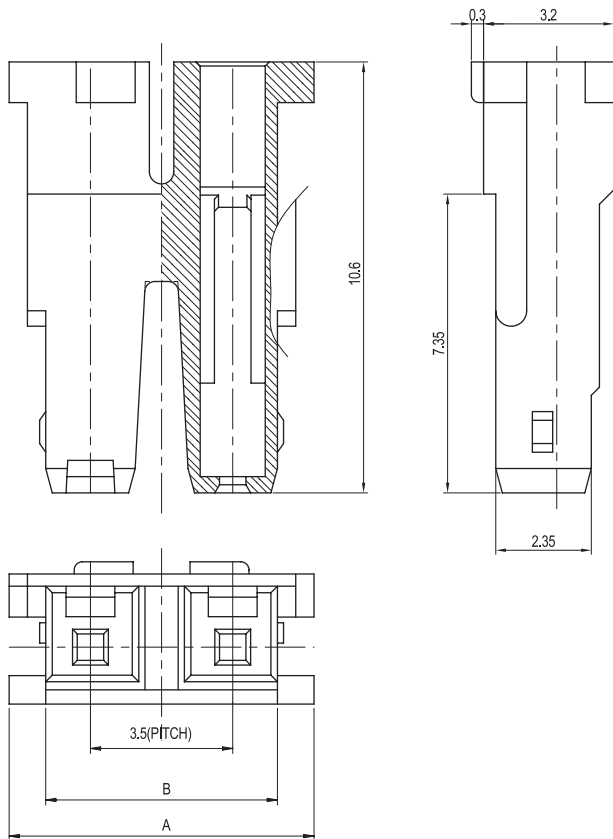


## Material

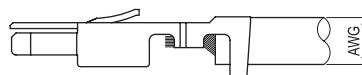
| I/NO | DESCRIPTION | TITLE   | MATERIAL           |
|------|-------------|---------|--------------------|
| 1    | HOUSING     | 35001HS | PA66, UL94 V Grade |

## Available Pin

| PARTS NO.     | DIM. A | DIM. B |
|---------------|--------|--------|
| 35001HS-02000 | 7.50   | 5.70   |



TERMINAL ASSEMBLY DRAWING



AWG : #24 ~ #28

## Specification

| ITEM                   | SPEC         |
|------------------------|--------------|
| Voltage Rating         | AC/DC 1400V  |
| Current Rating         | AC/DC 1A     |
| Operating Temperature  | -25℃~+85℃    |
| Contact Resistance     | 30mΩ MAX     |
| Withstanding Voltage   | AC3800V/1min |
| Insulation Resistance  | 1000MΩ MIN   |
| Applicable Wire        | AWG #24~#28  |
| Applicable P.C.B       | -            |
| Applicable FPC/FFC     | -            |
| Solder Height          | -            |
| Crimp Tensile Strength | -            |
| UL FILE NO             | E108706      |

Application Terminal : 35001TS (176 page)